

Maize Genetics Community Session:

Update from US funding agencies:

- Ann Sylvester, Program Director, PGRP
- Cliff Weil, Rotator, PGRP
- Karen Cone, Program Director, Genetic Mechanisms, MCB

Update from MaizeGDB:

- Carson Andorf

Update from Maize Genetics Executive Committee (MGEC):

- Karen Koch, Chair (UF) ----- Survey highlights and new initiatives
- Jianming Yu, Chair-Elect (ISU)

Maize Genetics Community Session:

Update from US funding agencies:

- Ann Sylvester, Program Director, PGRP
- Cliff Weil, Rotator, PGRP
- Karen Cone, Program Director, Genetic Mechanisms, MCB

Update from MaizeGDB:

- Carson Andorf

Update from Maize Genetics Executive Committee (MGEC):

- Karen Koch, Chair (UF) ----- Survey highlights and new initiatives
- Jianming Yu, Chair-Elect (ISU)

Maize Genetics Community Session:

Update from US funding agencies:

- Ann Sylvester, Program Director, PGRP
- Cliff Weil, Rotator, PGRP
- Karen Cone, Program Director, Genetic Mechanisms, MCB

Update from MaizeGDB:

- Carson Andorf

Update from Maize Genetics Executive Committee (MGEC):

- Karen Koch, Chair (UF) ----- Survey highlights and new initiatives
- Jianming Yu, Chair-Elect (ISU)

The Maize Genetics Executive Committee (MGEC):

What do we do?

- Identify needs and opportunities
- Communicate to the broadest-possible life-science community
- Help recognize some of the best among us (Awards)
- Interface with MaizeGDB and the Steering Committee (Program)

The Maize Genetics Executive Committee (MGEC):

What do we do?

- Identify needs and opportunities
- Communicate to the broadest-possible life-science community
- Help recognize some of the best among us (Awards)
- Interface with MaizeGDB and the Steering Committee (Program)

New this year:

- RA Emmerson Award for Lifetime Achievement in Maize Genetics
- New funding and initiatives:
 - RCN (Research Coordination Network)
 - “Broadening and Energizing the Maize Genetics Research Community”

The Maize Genetics Executive Committee (MGEC)?



Karen Koch (Chair)
U. Florida



Jianming Yu (New Chair)
Iowa State U.



Sean Kaepler
U Wisconsin



Paul Chomet
NRGene



Pat Schnable
Iowa State U



Kathleen Newton
Univ. Missouri



Natalia de Leon
U. Wisconsin



Sherry Flint-Garcia
USDA-ARS, U Missouri



Tom Brutnell
Danforth Center



David Jackson
Cold Spring Harbor Lab



Marilyn Wharburton
USDA



Ed Buckler
USDA, Cornell U.

The Maize Genetics Executive Committee (MGEC) - Appointed members



Irina Makarevitch
Hamline U
USA
Small-Collage Rep



Silvio Salvi
U of Bologna
Italy
European Rep



Jianbing Yan
Huazhong Ag U
China
Asian Rep



Ruairidh Sawers
Cinvestav
Mexico
Latin American Rep

Awards Committee:



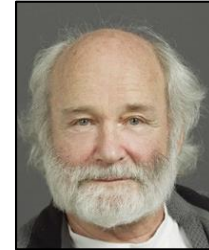
Nathan
Springer
U Minnesota



Sarah
Hake
UC Berkeley



Natalia
De Leon
UW-Madison



Mike
Freeling
UC Berkeley



Paula
McSteen
U Missouri



David
Braun
U Missouri



Jianming
Yu
Iowa State U

Maize Genetics Community?

Who are we?

Over 350 total replies – Thank you!

Who are we?

Over 350 total replies – Thank you!

Why does this matter?

Who are we?

Over 350 total replies – Thank you!

Why does this matter?

New funding: A Research Coordination Network (RCN) proposal submitted by the Maize Genetics Executive Committee (MGEC) will be funded by the US-National Science Foundation (NSF).

Who are we?

Over 350 total replies – Thank you!

Why does this matter?

New funding: A Research Coordination Network (RCN) proposal submitted by the Maize Genetics Executive Committee (MGEC) will be funded by the US-National Science Foundation (NSF).

Funding will support a 5-year plan for our community:

- The next 5 Maize Genetics Conferences
- Resources to help identify, prioritize, and target our most important needs at a community level.

Who are we?

Over 350 total replies – Thank you!

Why does this matter?

New funding: A Research Coordination Network (RCN) proposal submitted by the Maize Genetics Executive Committee (MGEC) will be funded by the US-National Science Foundation (NSF).

Funding will support a 5-year plan for our community:

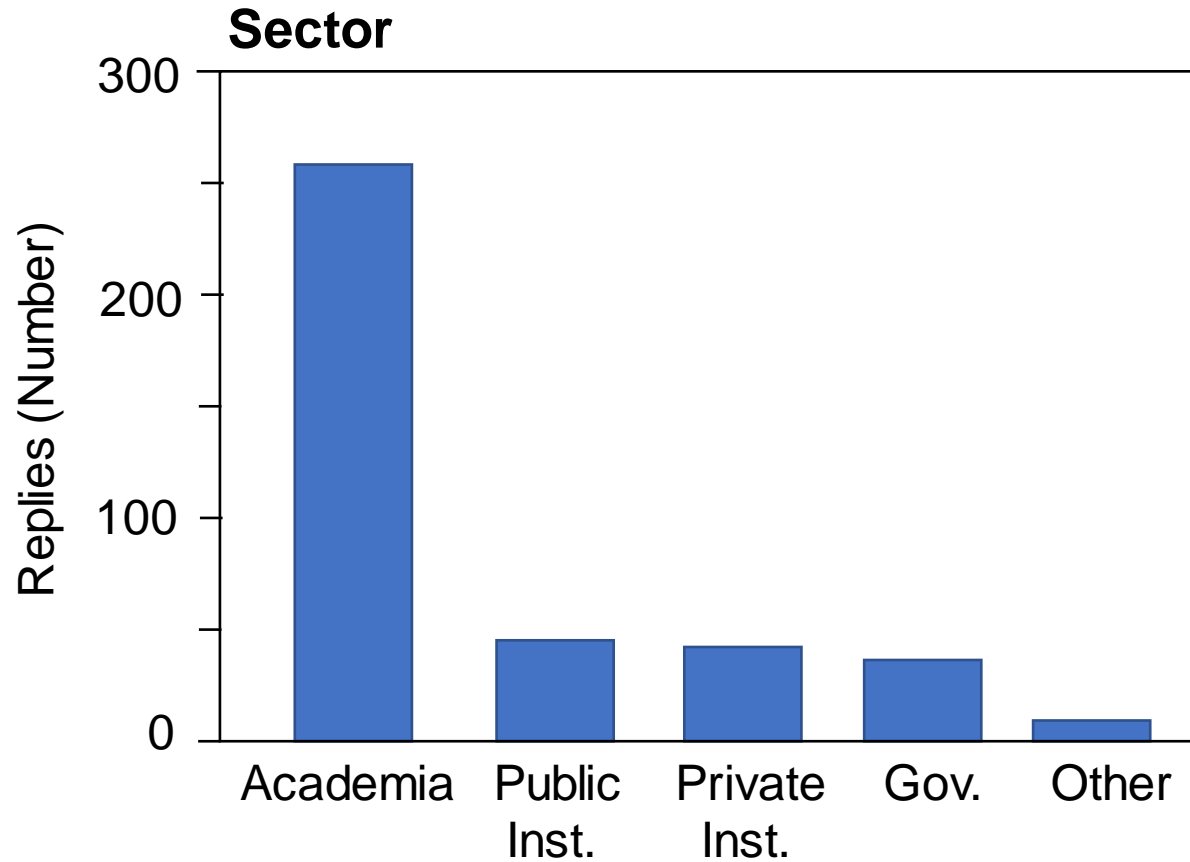
- The next 5 Maize Genetics Conferences
- Resources to help identify, prioritize, and target our most important needs at a community level.

We need to know:

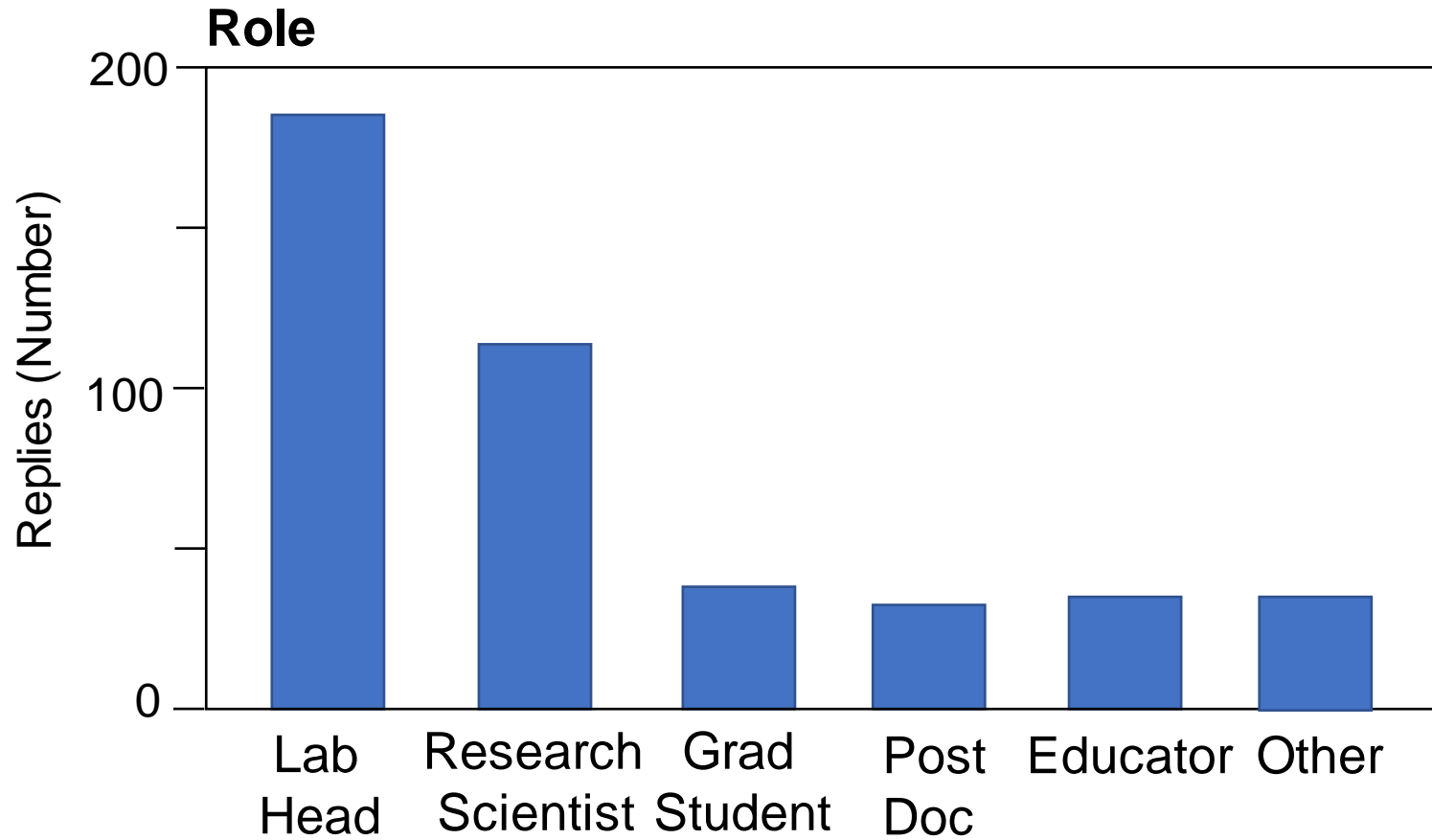
- What ARE our most important needs at a community level?
- How do we best increase our depth, breadth, and vibrancy?

The survey: Over 350 total replies – Thank you!

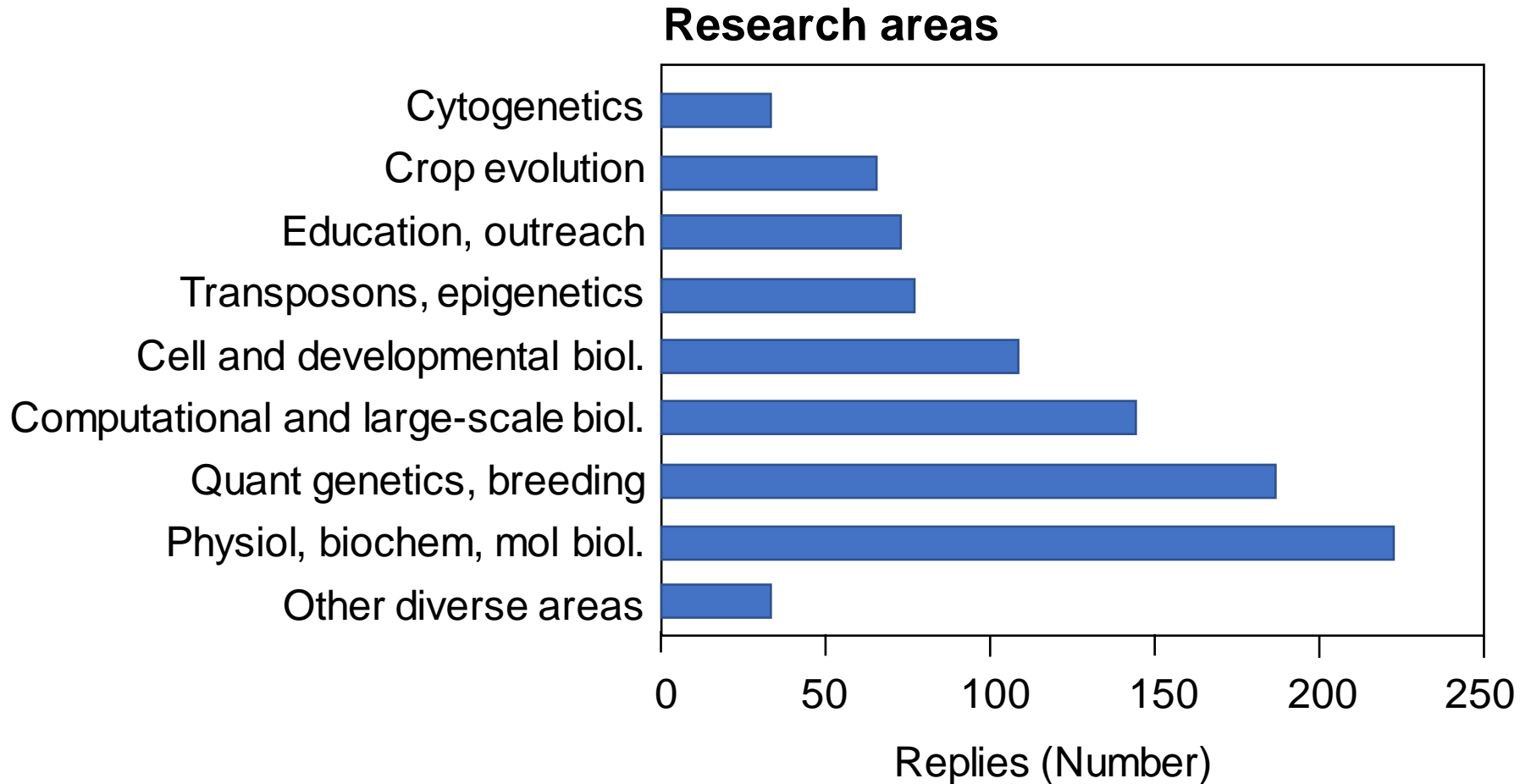
Who are we? Over 350 total replies – Thank you!



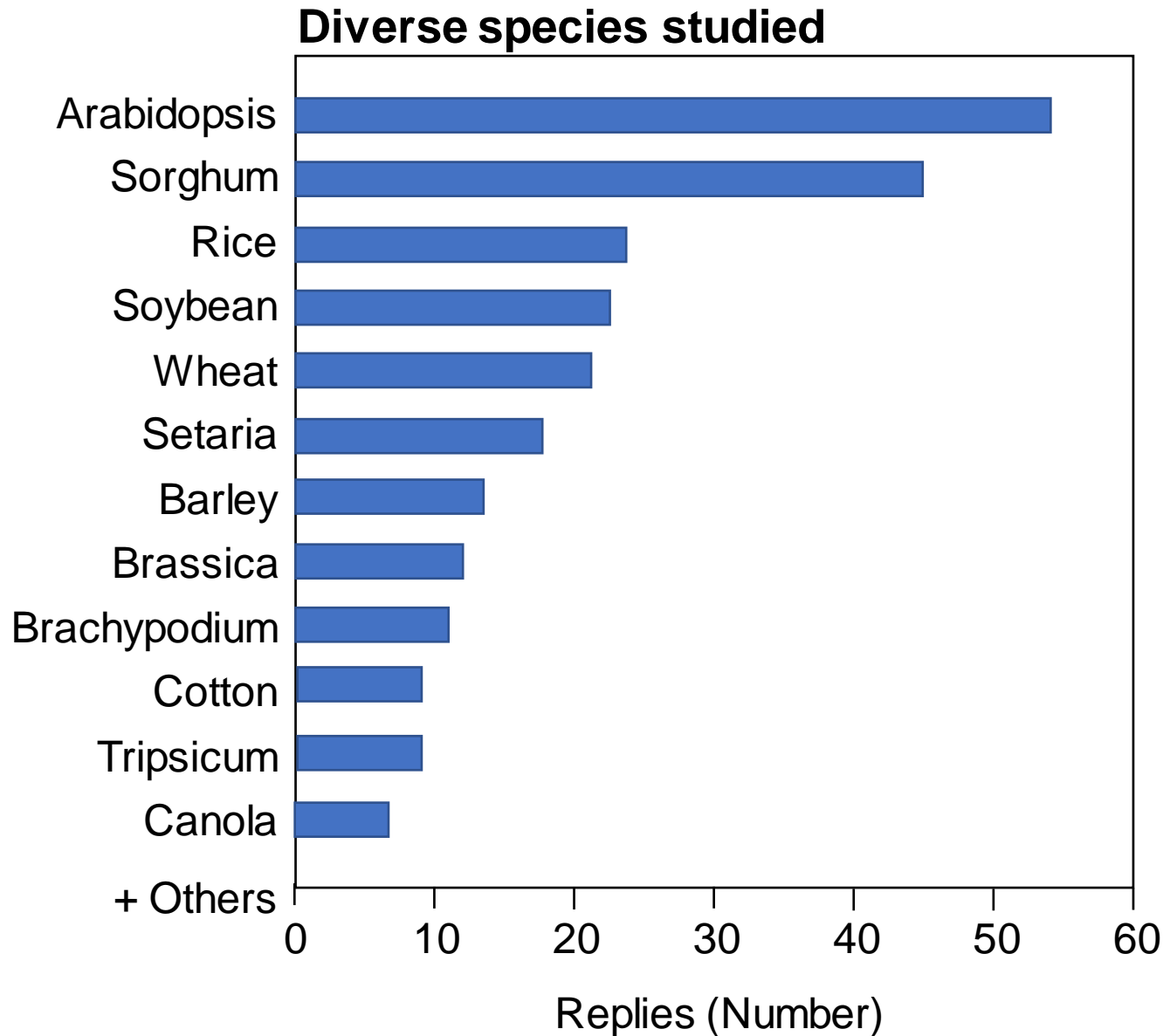
Who are we?



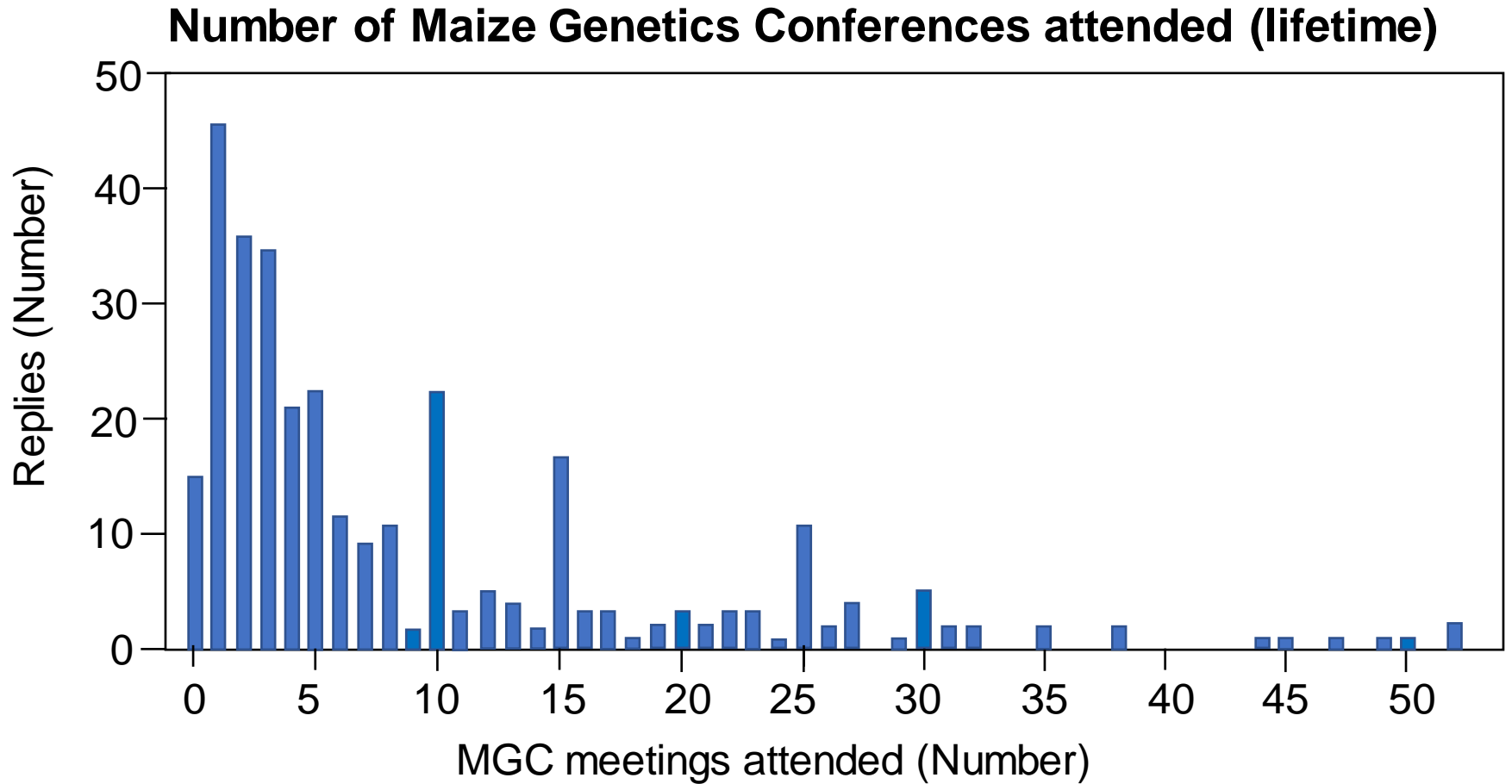
Who are we?



Who are we?

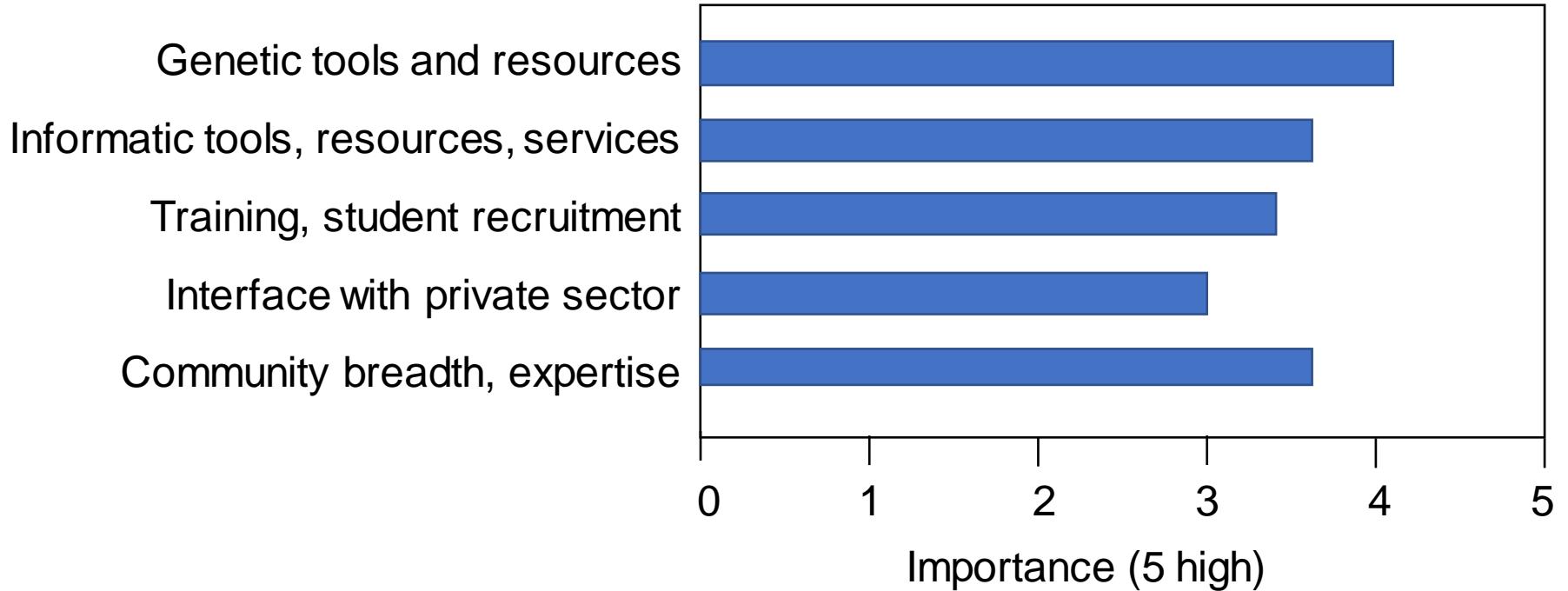


Who are we?



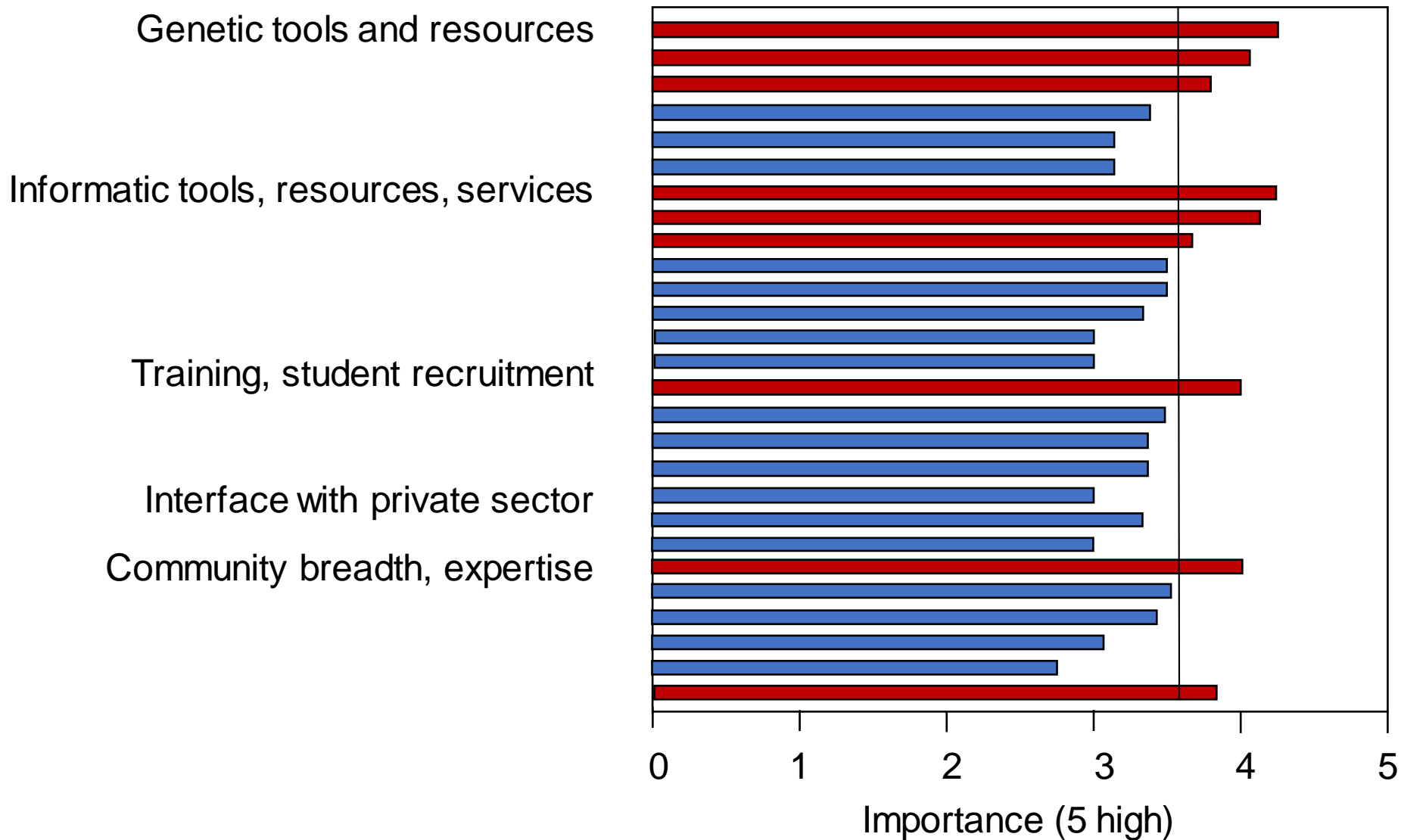
Community-level priorities?

Most important areas for community focus?



Community-level priorities?

Collective priorities



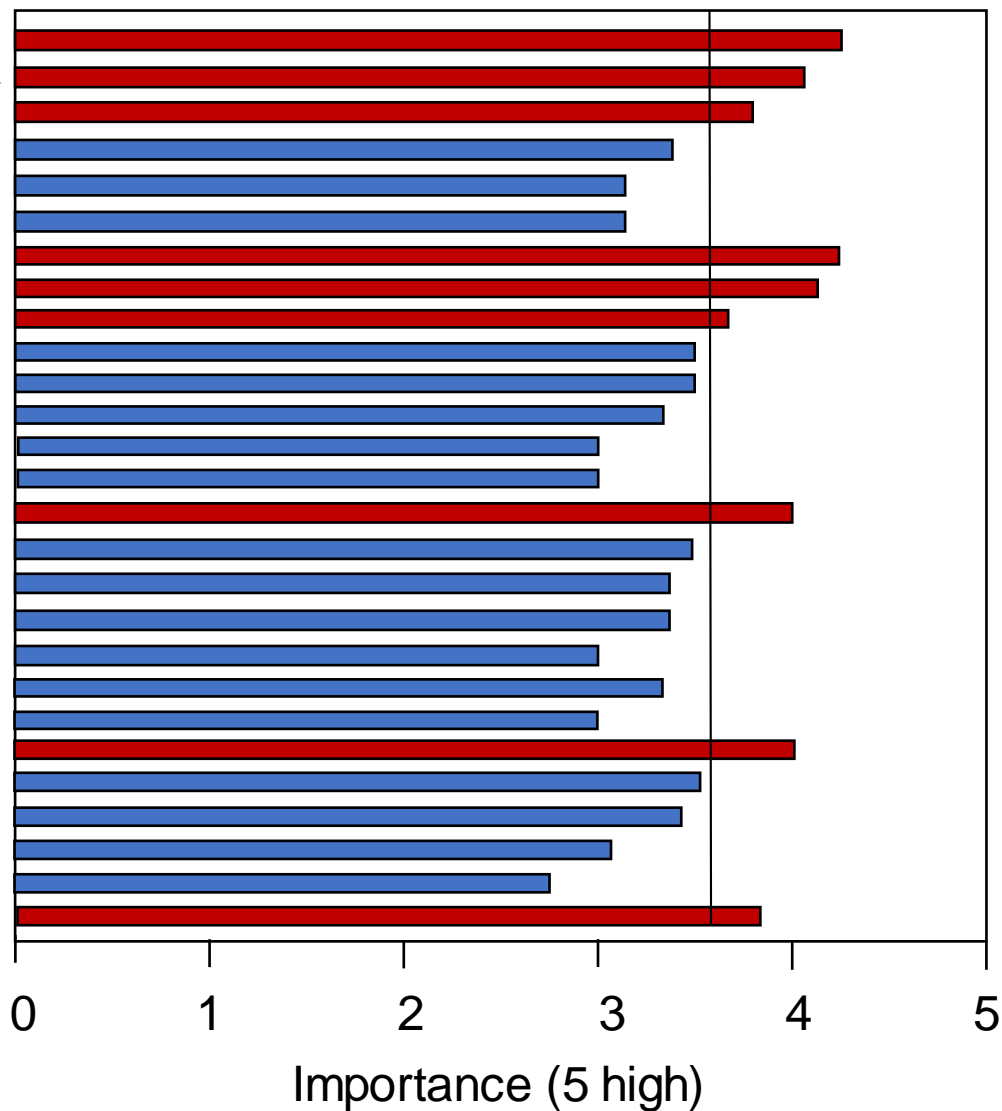
Community-level priorities?

Maize stock centers

Transformation and gene-editing facilities

Public knockout mutant resources

Collective priorities



Community-level priorities?

Maize stock centers

Transformation and gene-editing facilities

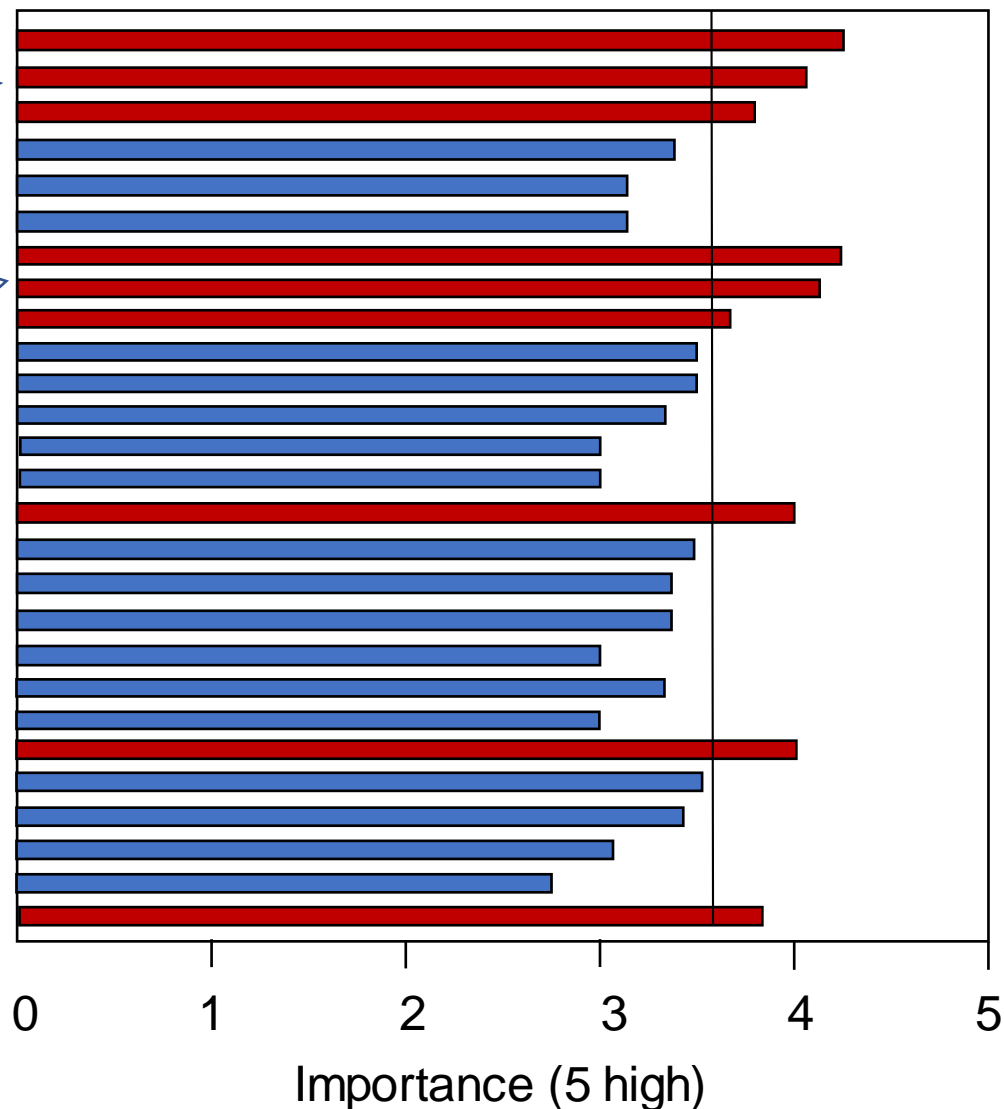
Public knockout mutant resources

Simplified access and retrieval from public databases

High-quality annotations for key inbreds

Improved tools for integration of omics data

Collective priorities



Community-level priorities?

Maize stock centers

Transformation and gene-editing facilities

Public knockout mutant resources

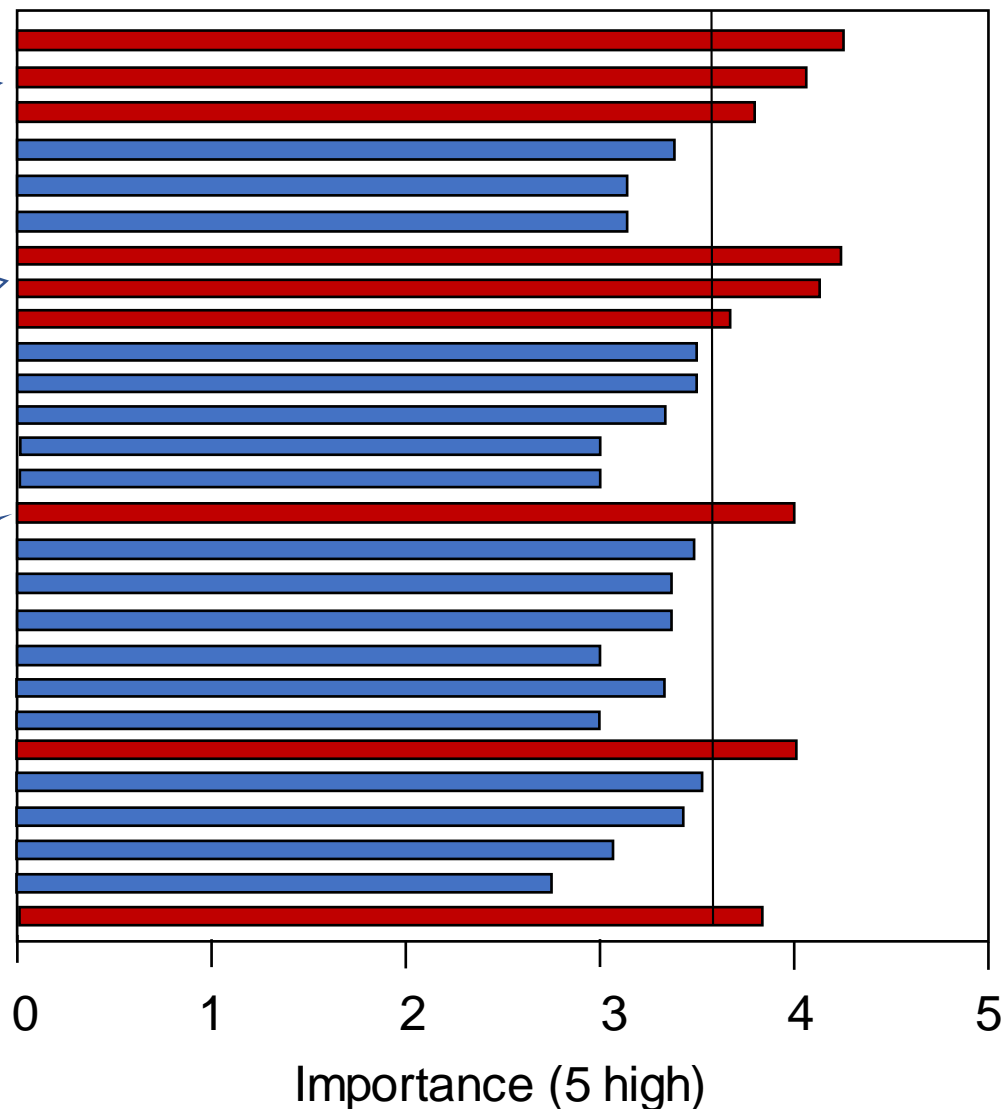
Simplified access and retrieval from public databases

High-quality annotations for key inbreds

Improved tools for integration of omics data

\$ for graduate students to attend maize meetings

Collective priorities



Community-level priorities?

Maize stock centers

Transformation and gene-editing facilities

Public knockout mutant resources

Simplified access and retrieval from public databases

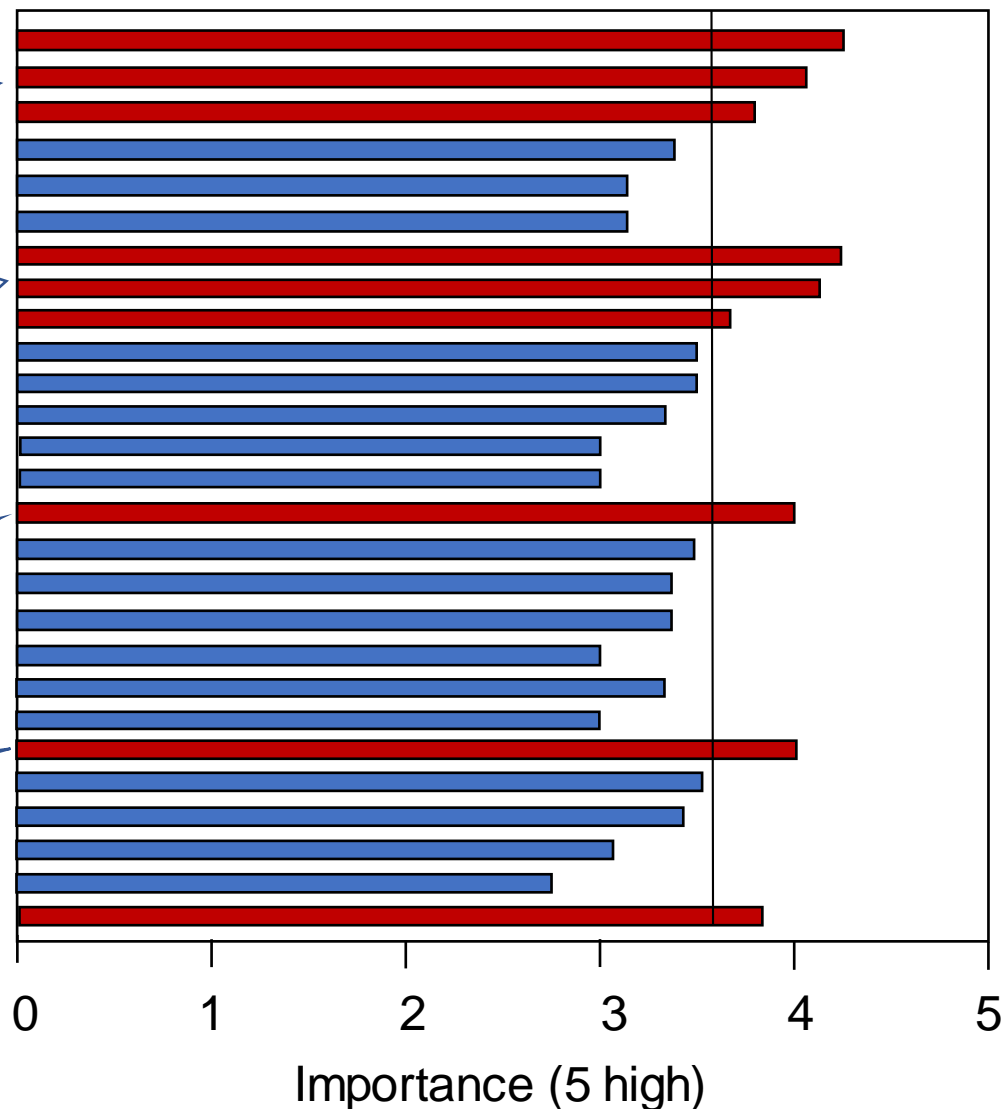
High-quality annotations for key inbreds

Improved tools for integration of omics data

\$ for graduate students to attend maize meetings

Broaden participation in MAGNet-like programs

Collective priorities



Community-level priorities?

Maize stock centers

Transformation and gene-editing facilities

Public knockout mutant resources

Simplified access and retrieval from public databases

High-quality annotations for key inbreds

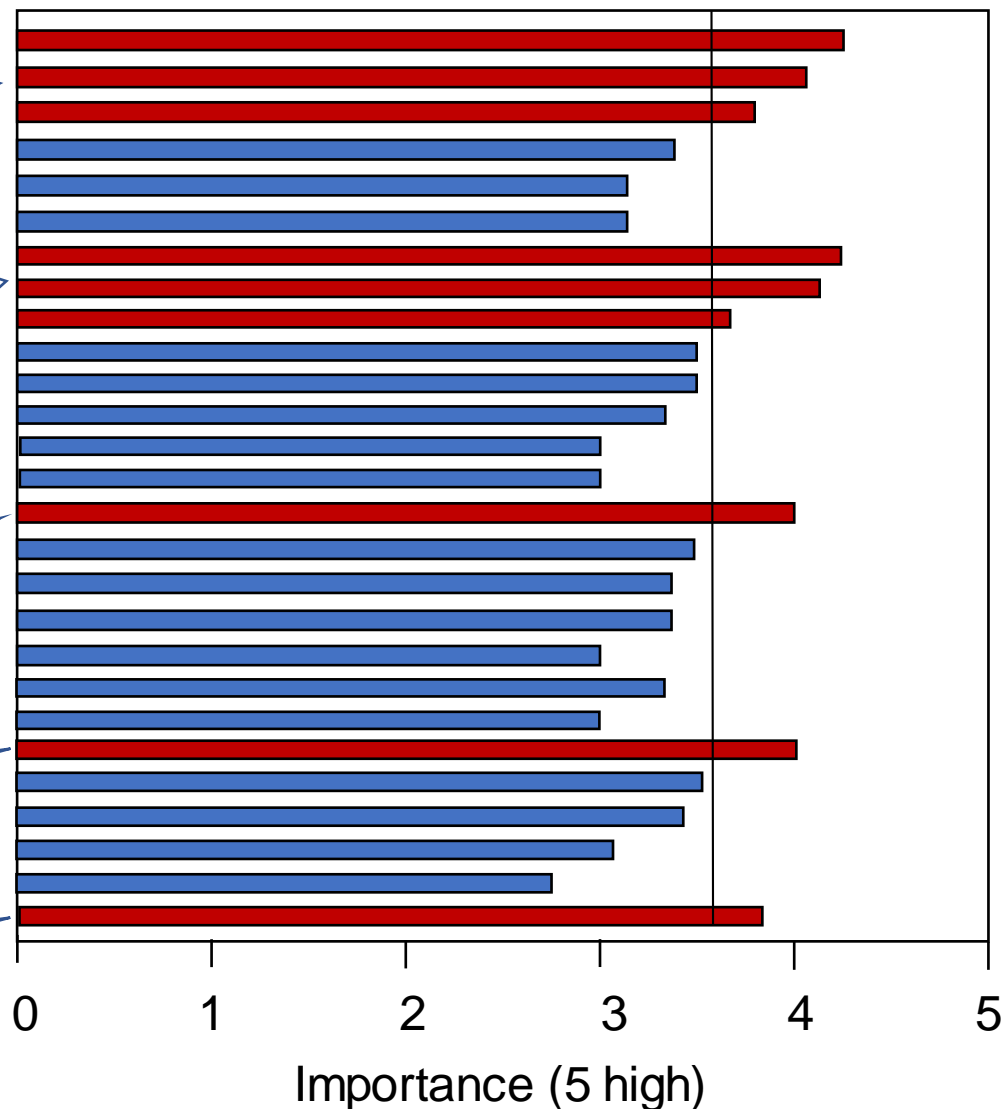
Improved tools for integration of omics data

\$ for graduate students to attend maize meetings

Broaden participation in MAGNet-like programs

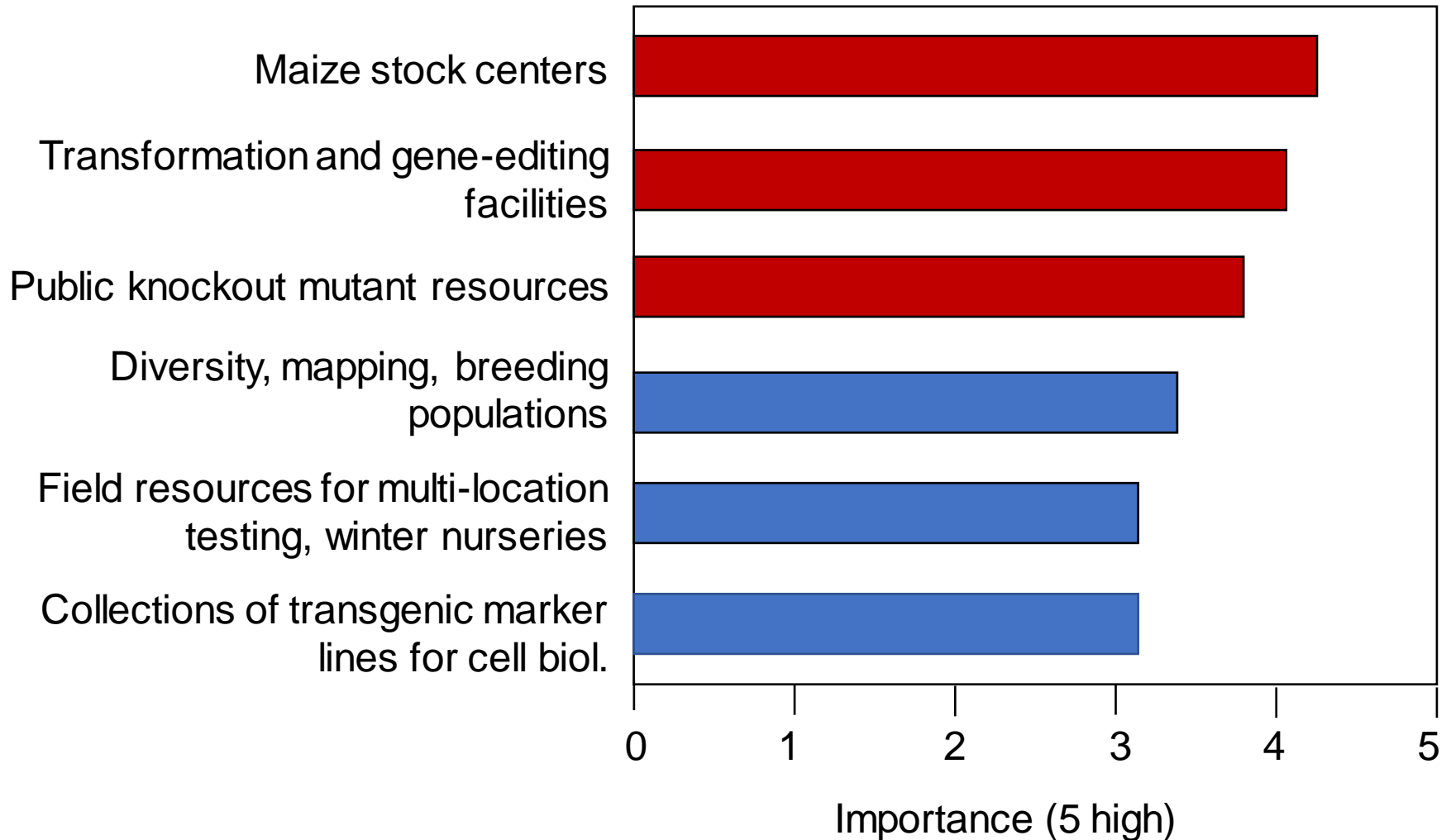
Help support attendees from the developing world

Collective priorities



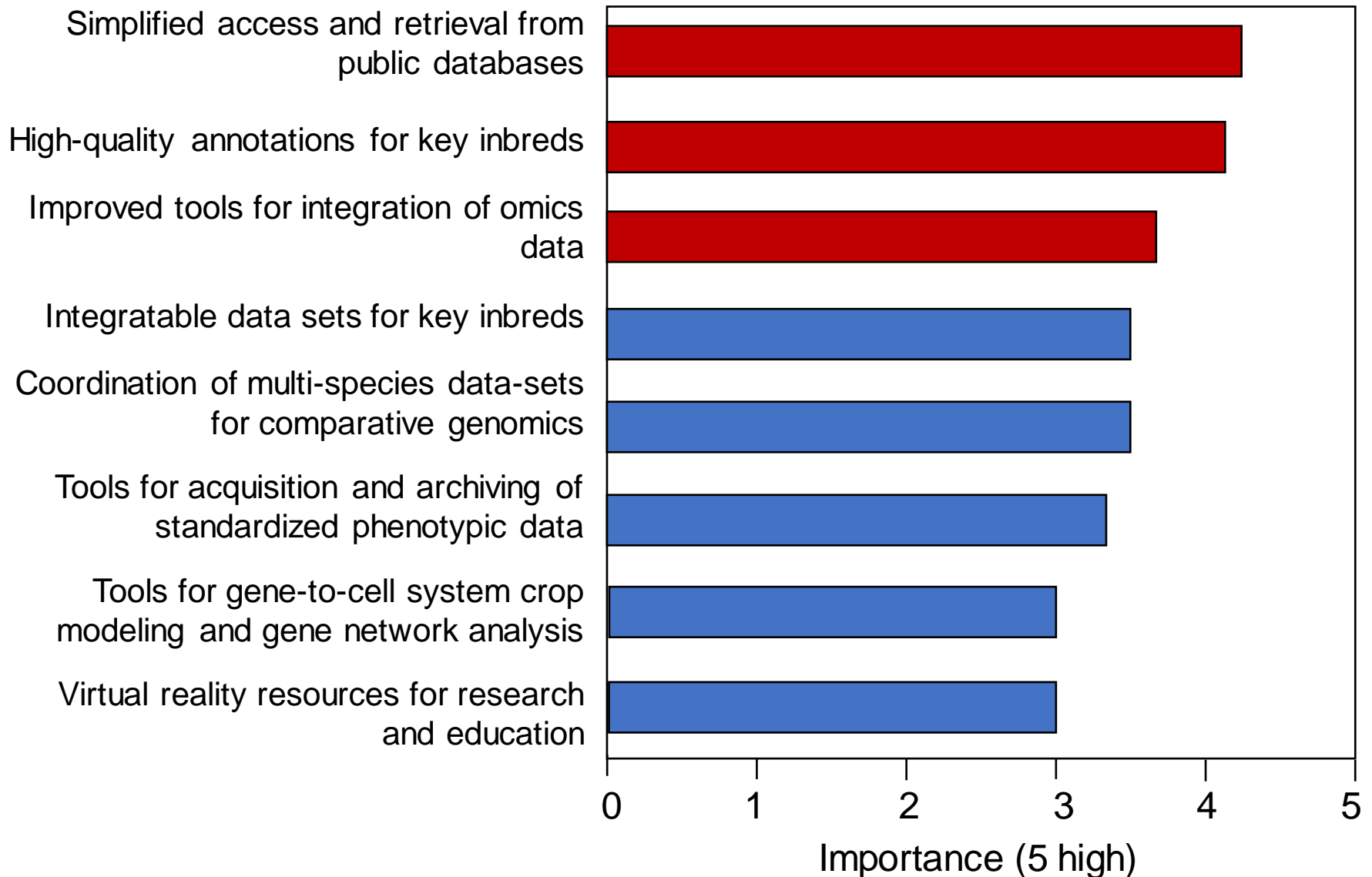
Community-level priorities?

Most important genetic tools and resources?



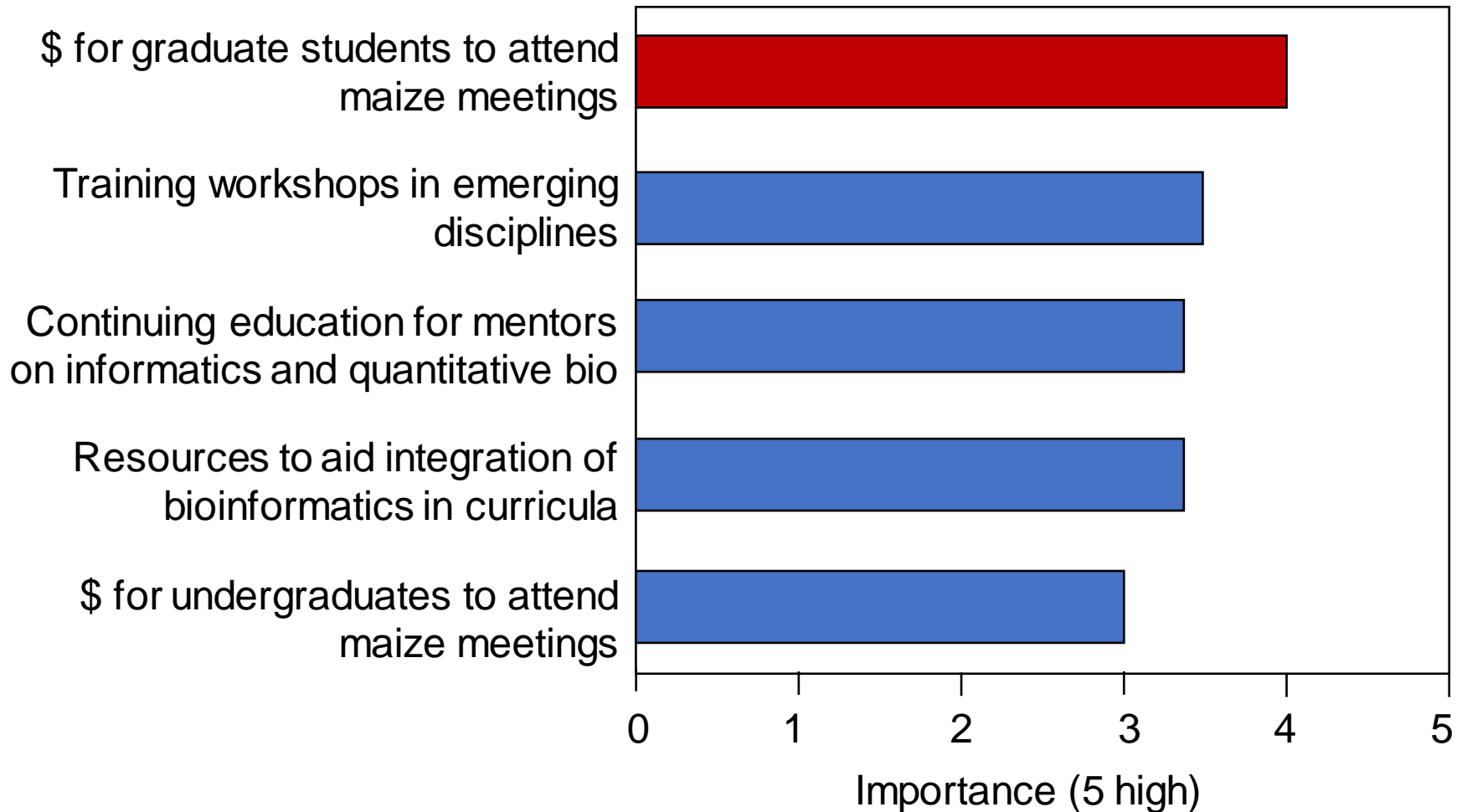
Community-level priorities?

Most important informatic resources?



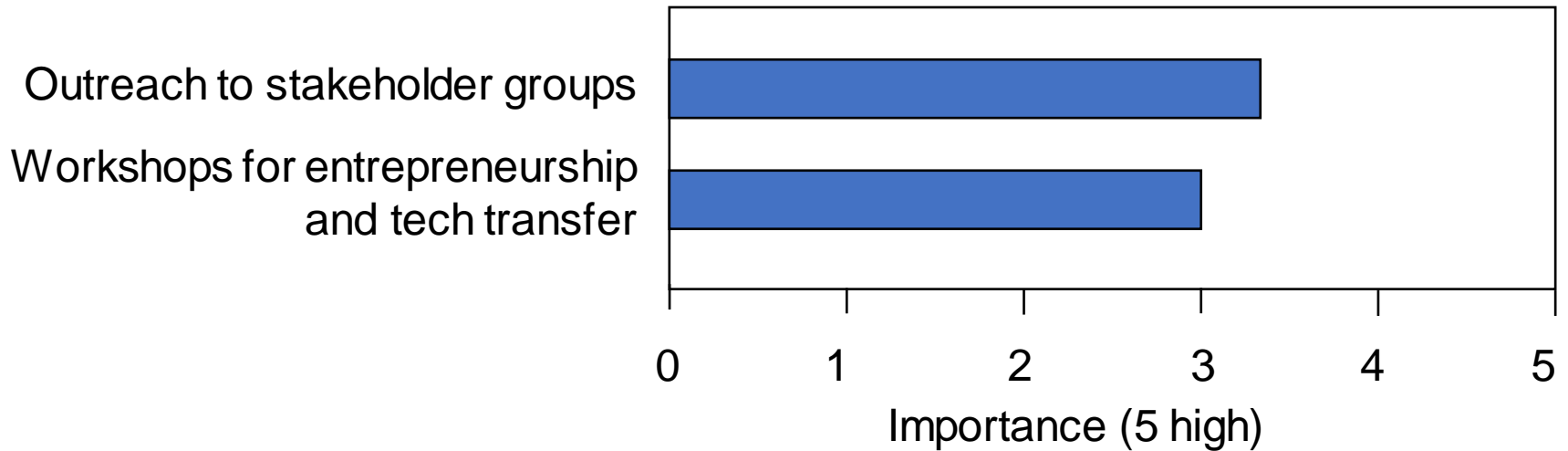
Community-level priorities?

Most important training and recruitment goals?



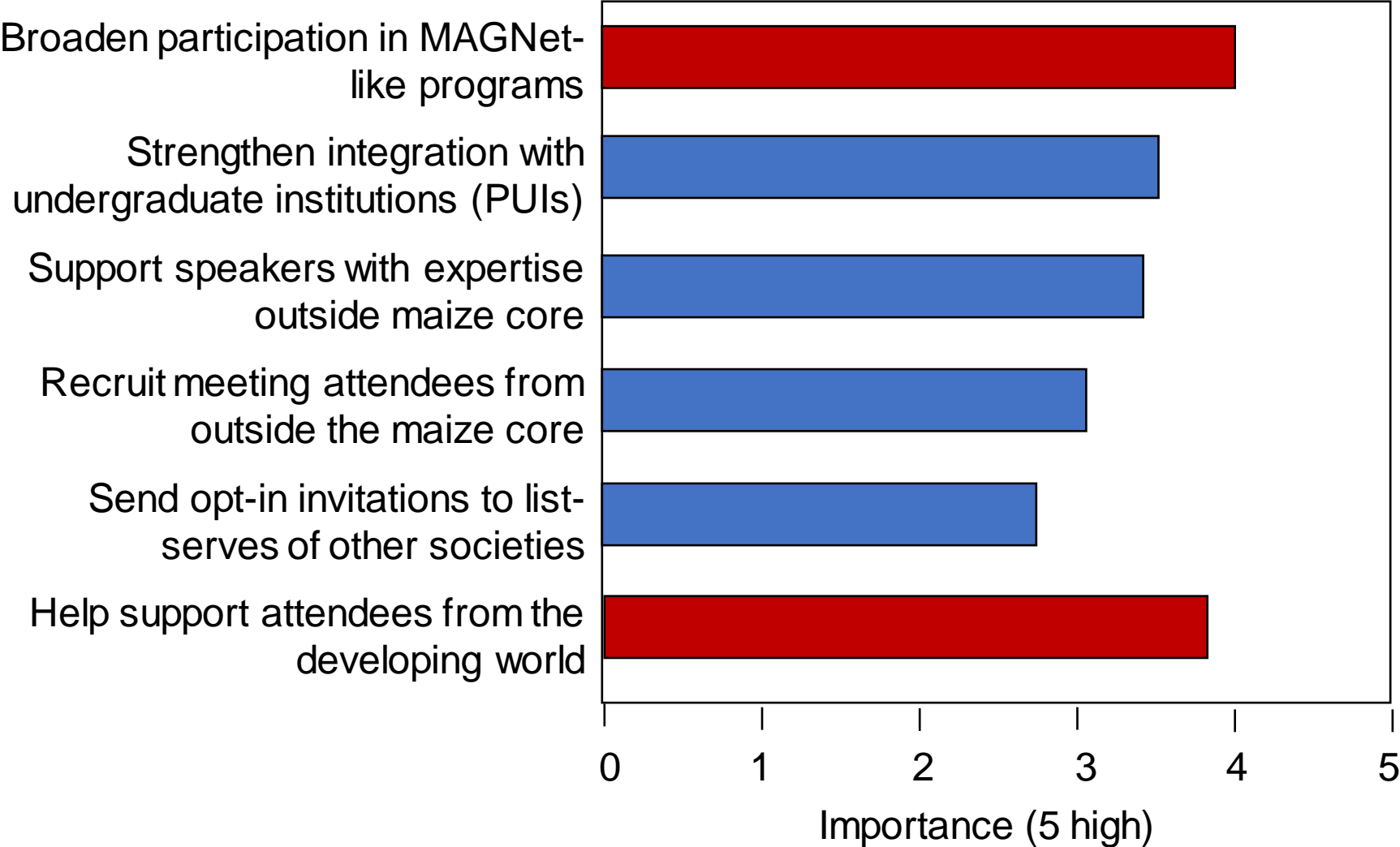
Community-level priorities?

Most important goals for basic to commercial?



Community-level priorities?

Most important aspects of breadth?



Community-level priorities?

Maize stock centers

Transformation and gene-editing facilities

Public knockout mutant resources

Simplified access and retrieval from public databases

High-quality annotations for key inbreds

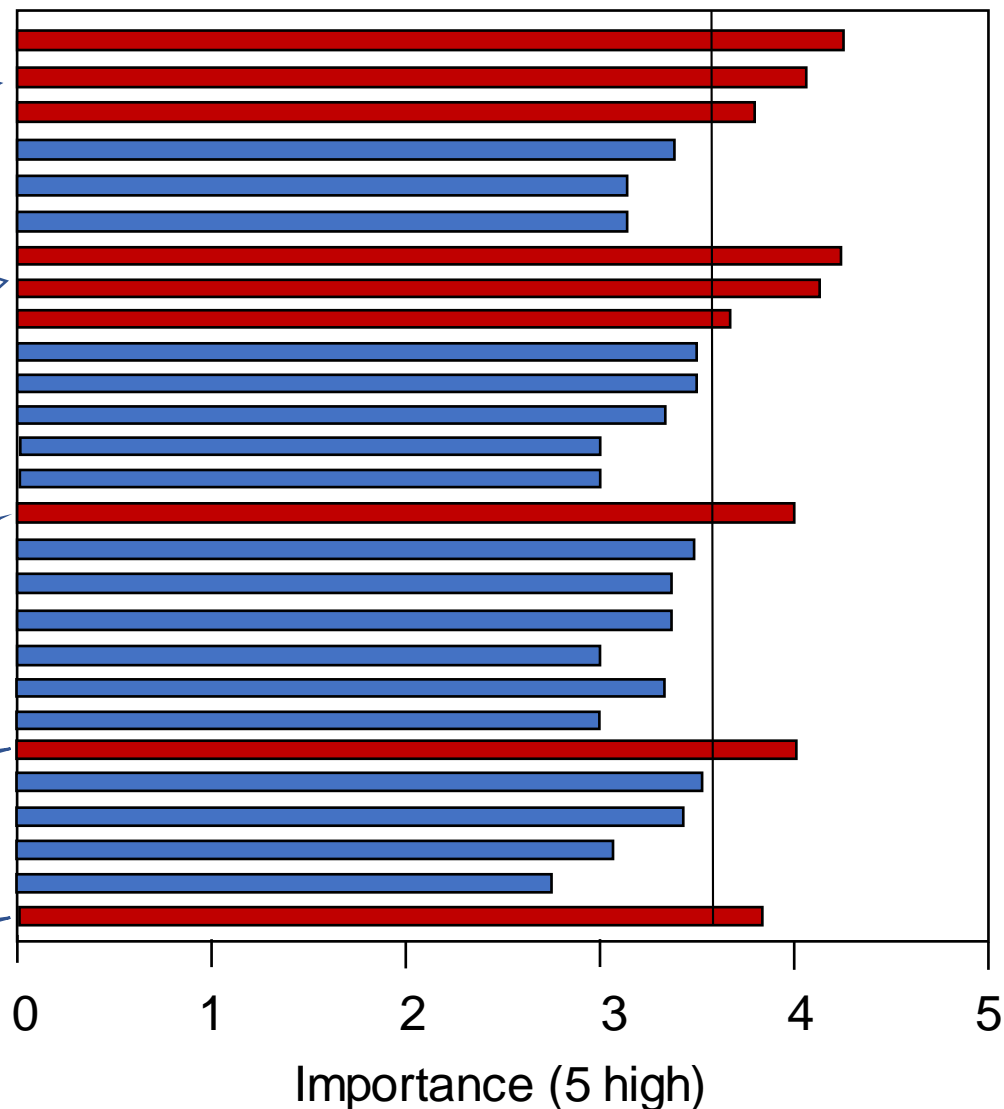
Improved tools for integration of omics data

\$ for graduate students to attend maize meetings

Broaden participation in MAGNet-like programs

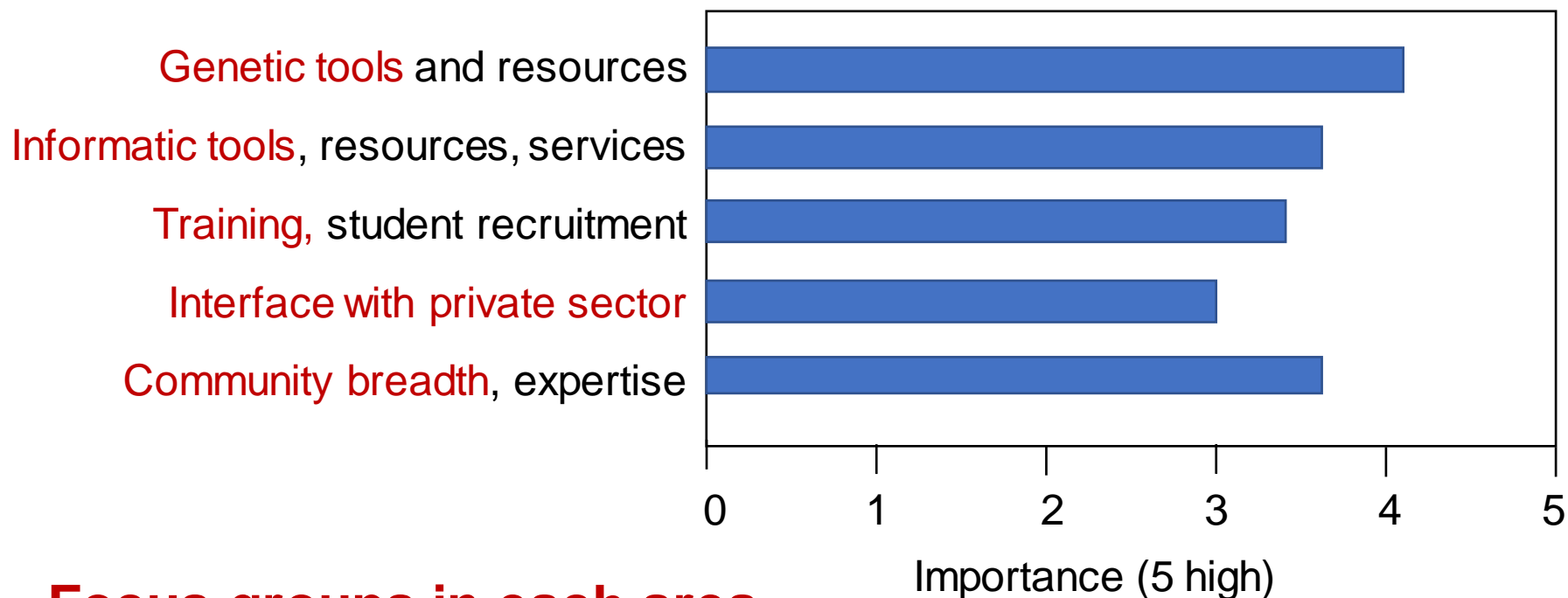
Help support attendees from the developing world

Collective priorities



Community-level priorities? – **New initiatives**

Most important areas for community focus?



Focus groups in each area

-- for mid-year meeting

The Maize Genetics Executive Committee (MGEC)?



Karen Koch (Chair)
U. Florida



Jianming Yu (New Chair)
Iowa State U.



Sean Kaepler
U Wisconsin



Paul Chomet
NRGene



Pat Schnable
Iowa State U



Kathleen Newton
Univ. Missouri



Natalia de Leon
U. Wisconsin



Sherry Flint-Garcia
USDA-ARS, U Missouri



Tom Brutnell
Danforth Center



David Jackson
Cold Spring Harbor Lab



Marilyn Wharburton
USDA



Ed Buckler
USDA, Cornell U.

The Maize Genetics Executive Committee (MGEC) - Appointed members



Irina Makarevitch
Hamline U
USA
Small-Collage Rep



Silvio Salvi
U of Bologna
Italy
European Rep



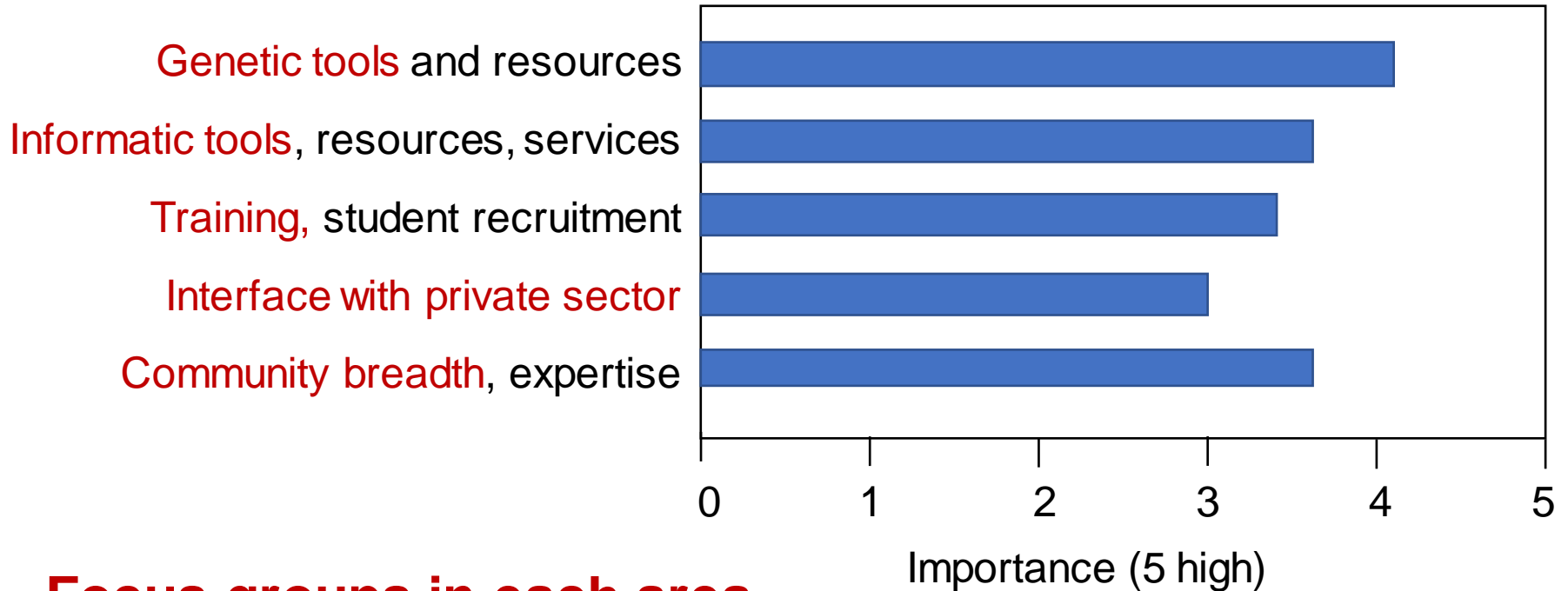
Jianbing Yan
Huazhong Ag U
China
Asian Rep



Ruairidh Sawers
Cinvestav
Mexico
Latin American Rep

Community-level priorities? – **New initiatives**

Most important areas for community focus?



Focus groups in each area

-- for mid-year meeting